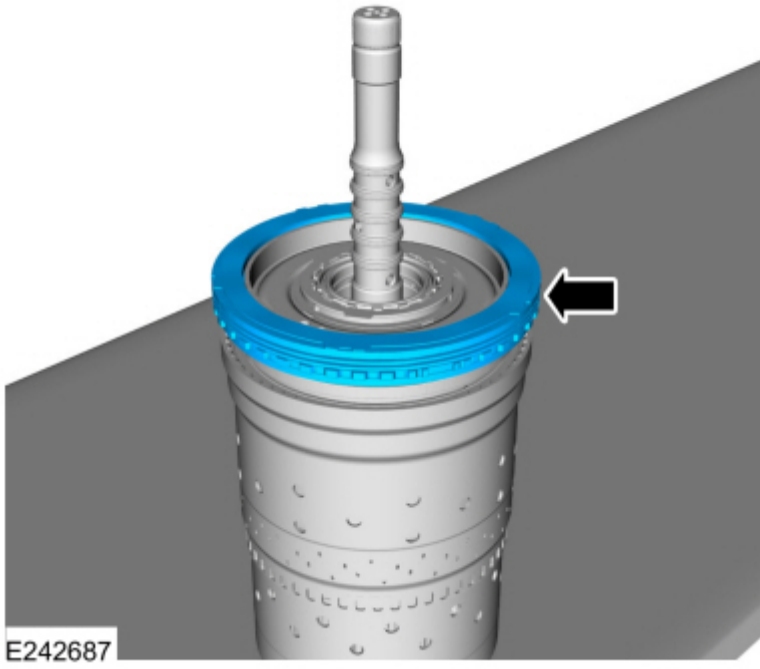


Your Ultimate Source for OEM Repair Manuals

FactoryManuals.net is a great resource for anyone who wants to save money on repairs by doing their own work. The manuals provide detailed instructions and diagrams that make it easy to understand how to fix a vehicle.

1991 FORD Escort 5 Doors OEM Service and Repair Workshop Manual

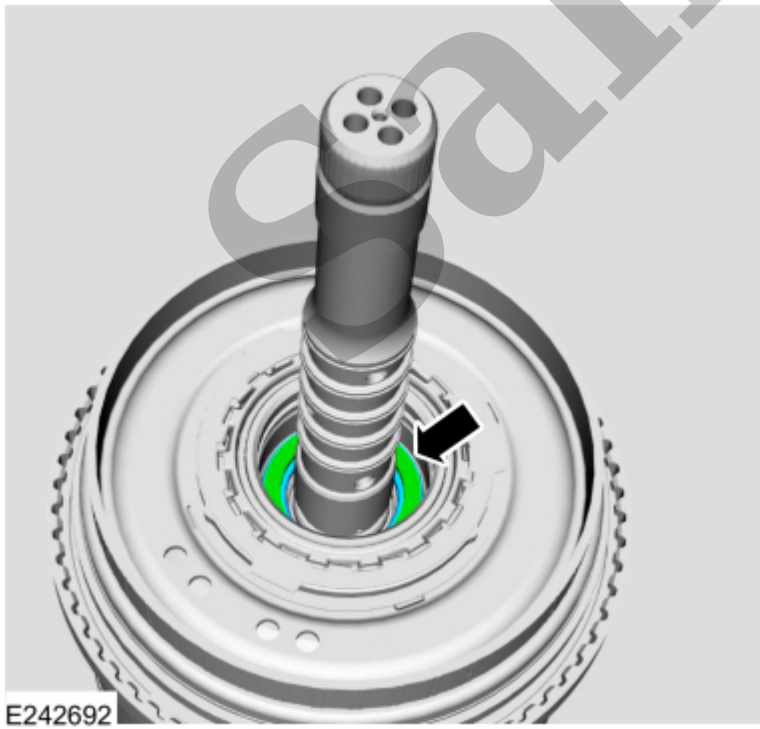
[Go to manual page](#)



[Click here to learn about symbols, color coding, and icons used in this manual.](#)

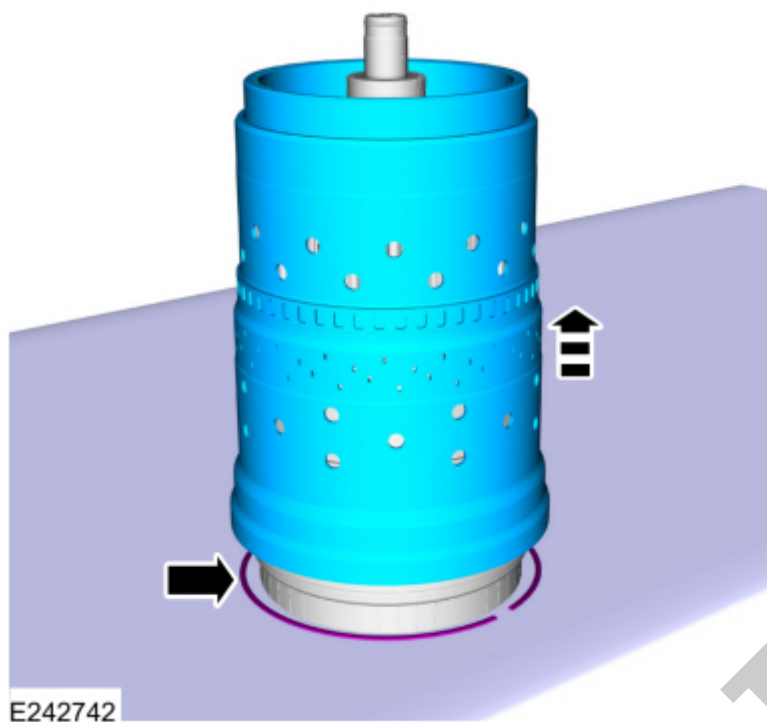
69. Using a magnet, remove the selective shim and the (T3) thrust bearing.

Use the General Equipment: Magnet



[Click here to learn about symbols, color coding, and icons used in this manual.](#)

72. Flip the clutch and planetary assembly over with the input shaft through a hole in the bench. Remove the No. 1 planetary carrier snap ring and remove the clutch and planetary container cylinder.



[Click here to learn about symbols, color coding, and icons used in this manual.](#)

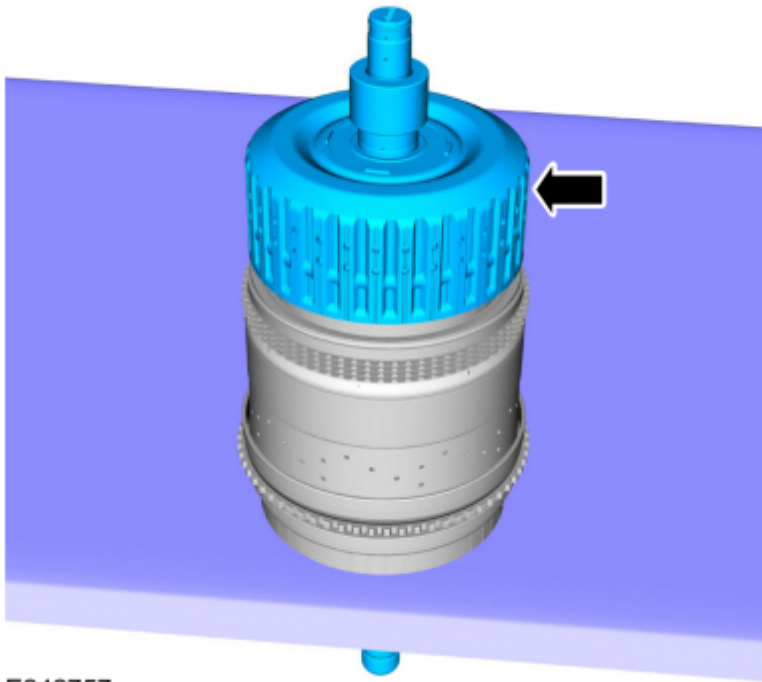
73. 1. Inspect the No. 4 ring gear.

2. **NOTE**

Remove the ring gear when replacement is necessary.

If necessary, remove the ring gear snap ring.

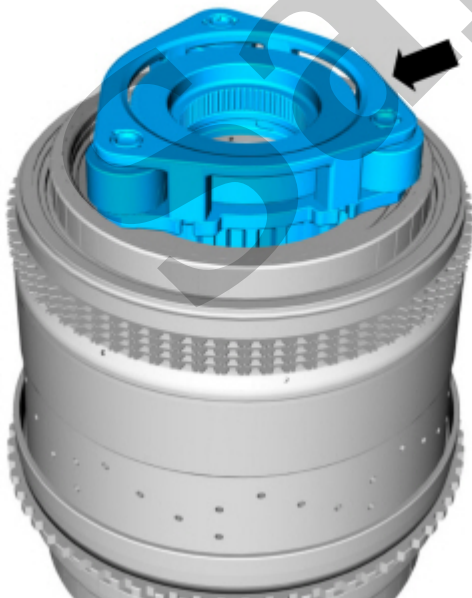
3. If necessary, remove the ring gear from the inside of the clutch and planetary container cylinder.



E242757

[Click here to learn about symbols, color coding, and icons used in this manual.](#)

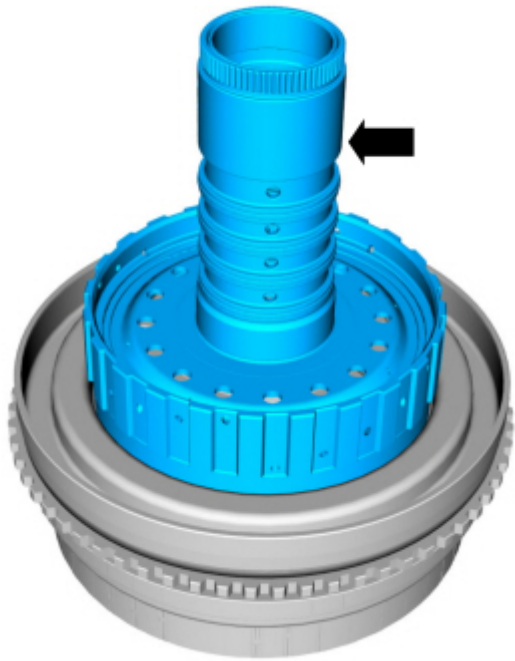
76. Remove the No. 3 planetary carrier and the No. 3 sun gear.



E242759

[Click here to learn about symbols, color coding, and icons used in this manual.](#)

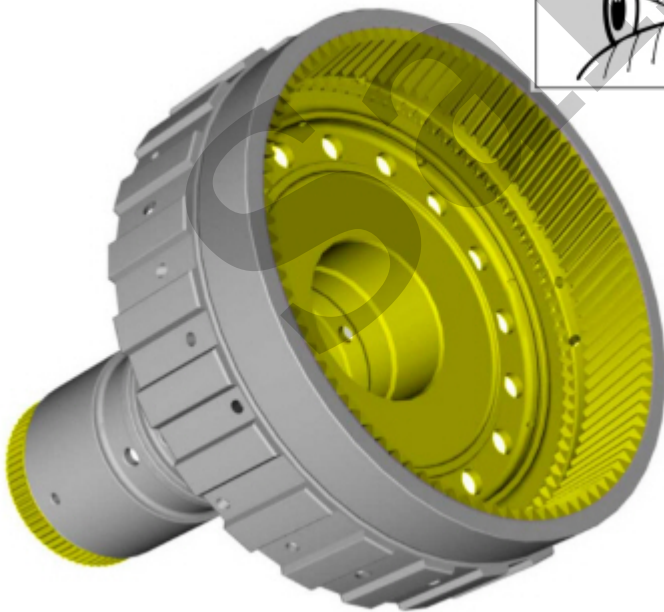
77. Inspect the No. 3 planetary carrier and the No. 3 sun gear.



E242761

[Click here to learn about symbols, color coding, and icons used in this manual.](#)

80. Inspect the No. 3 sun gear shaft and No. 2 ring gear assembly.



E246177

[Click here to learn about symbols, color coding, and icons used in this manual.](#)

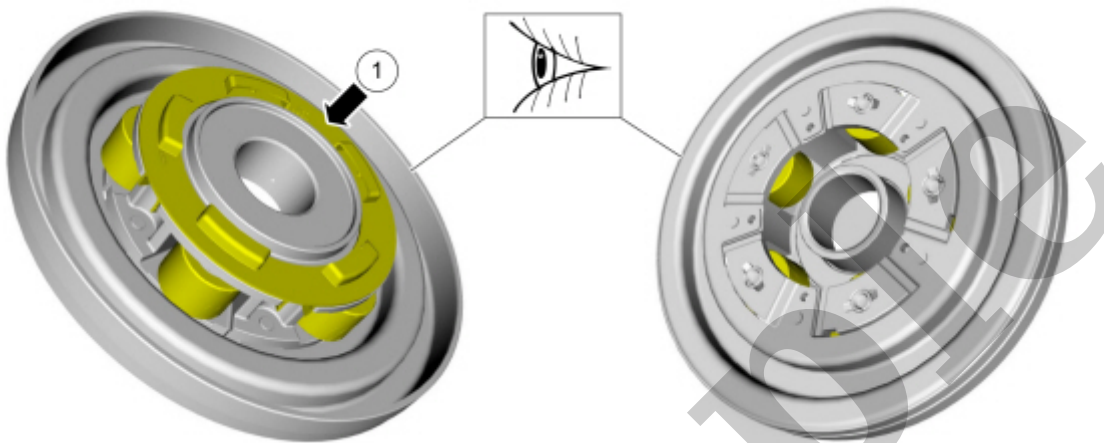
81. Remove the (T5) thrust bearing.

83. **NOTE**

It is not necessary to remove the fluid collector from the No. 2 planetary carrier.

Inspect the No. 2 planetary carrier and the fluid collector.

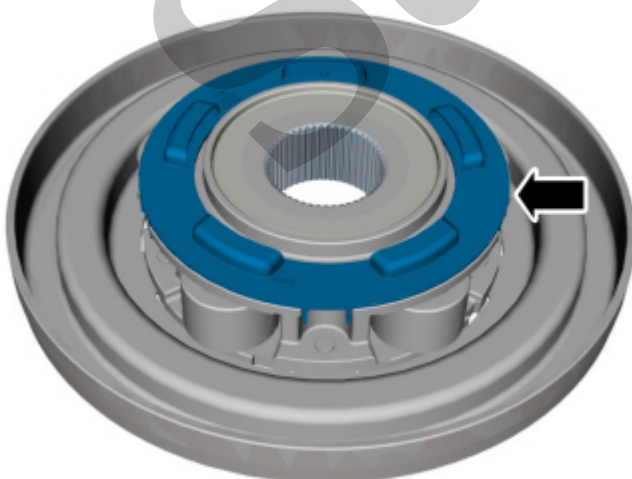
1. If the fluid collector is broken remove and discard.



E246178

[Click here to learn about symbols, color coding, and icons used in this manual.](#)

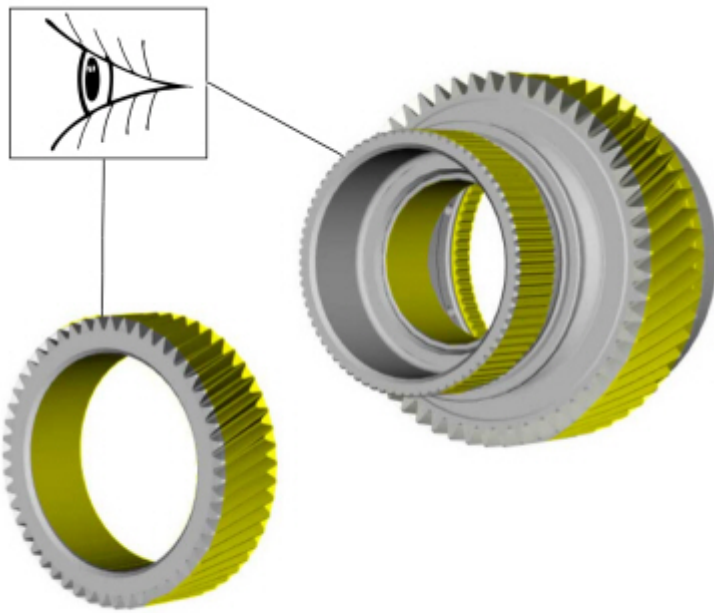
84. If necessary, install the new the fluid collector.



E243141

[Click here to learn about symbols, color coding, and icons used in this manual.](#)

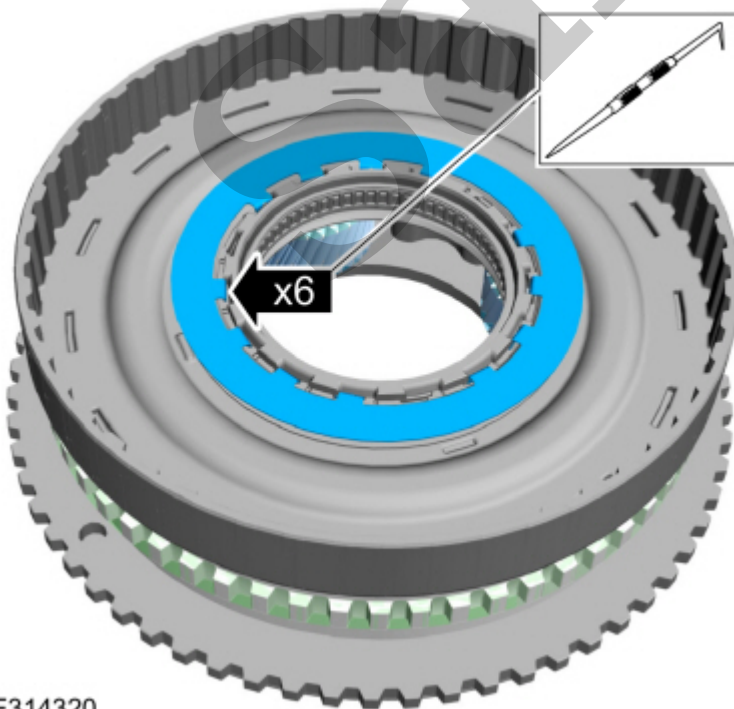
87. Inspect the No. 1 and No. 2 sun gears.



E246179

[Click here to learn about symbols, color coding, and icons used in this manual.](#)

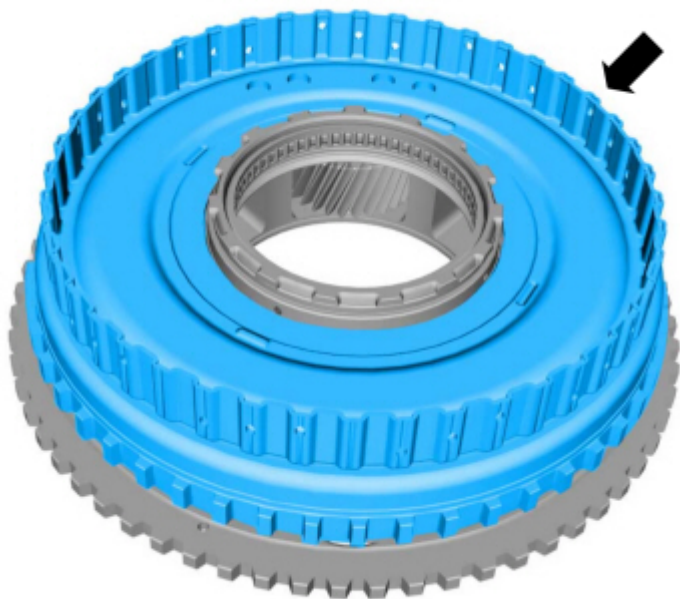
88. Gently pry up on the clips and remove the No. 1 bearing support locking ring.



E314320

[Click here to learn about symbols, color coding, and icons used in this manual.](#)

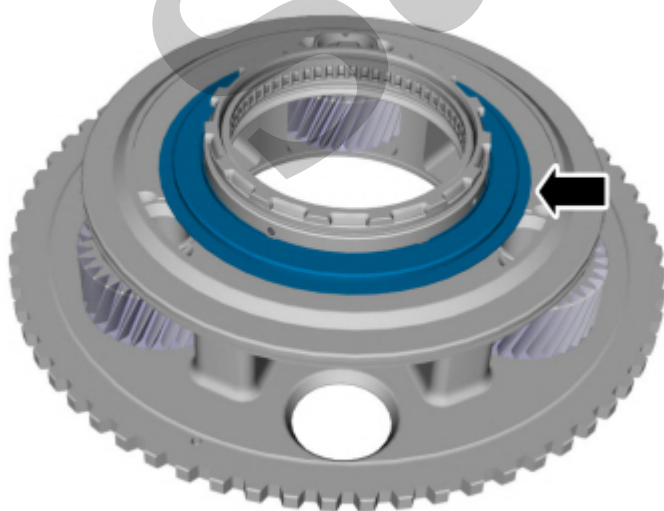
91. Remove the No. 1 ring gear.



E243137

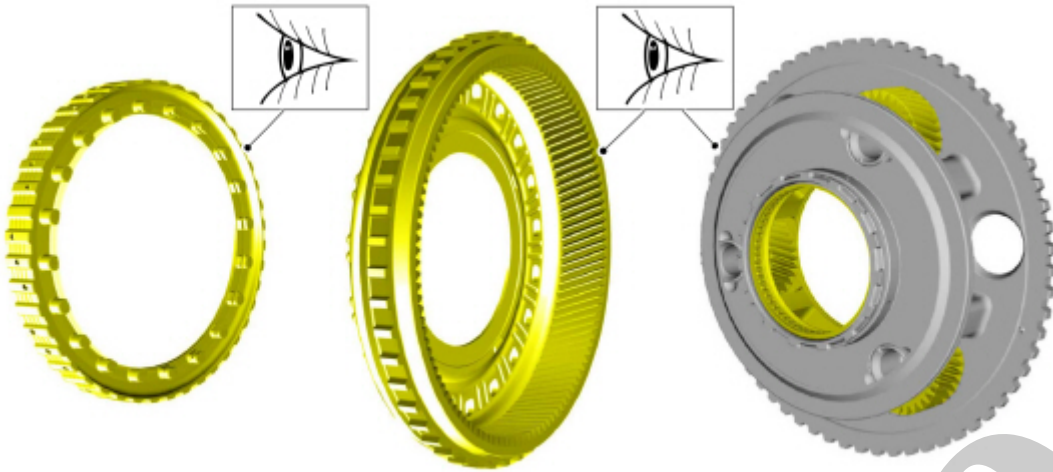
[Click here to learn about symbols, color coding, and icons used in this manual.](#)

92. Remove the ring gear No 1 bearing.



E243140

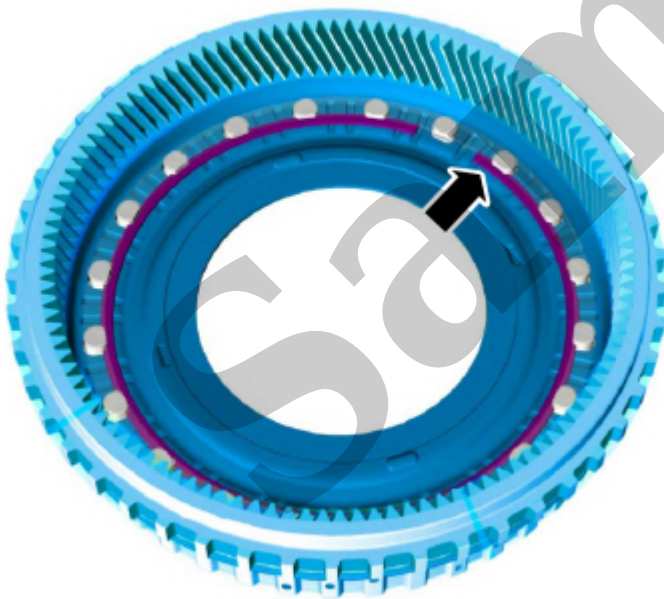
95. Inspect the A clutch hub, No. 1 ring gear and the No. 1 planetary carrier.



E283042

[Click here to learn about symbols, color coding, and icons used in this manual.](#)

96. Install the ring gear No 1 snap ring.

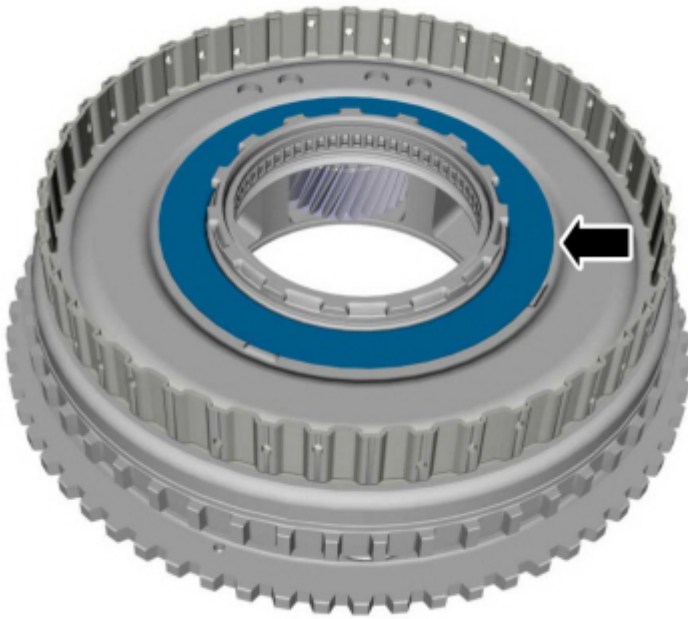


E283041

[Click here to learn about symbols, color coding, and icons used in this manual.](#)

All vehicles

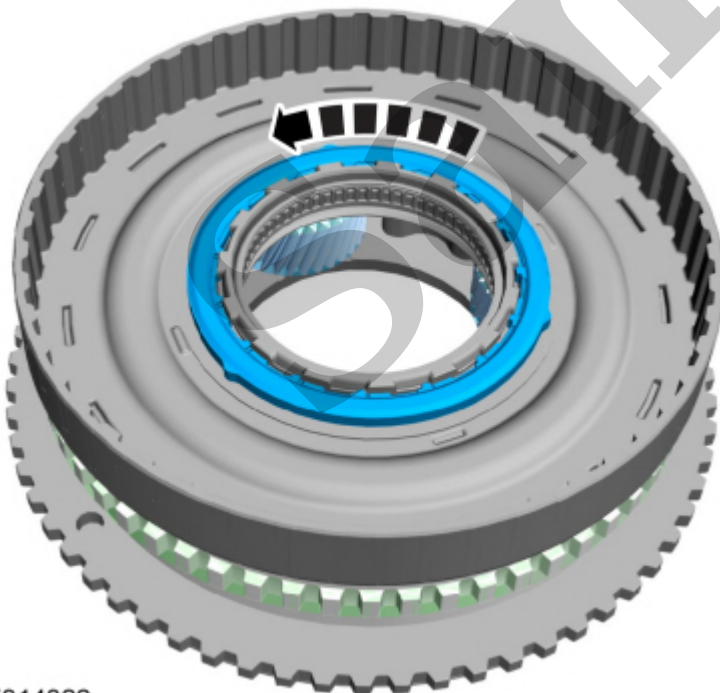
97. Install the ring gear No. 1 bearing.



E243131

[Click here to learn about symbols, color coding, and icons used in this manual.](#)

100. Install the ring gear No. 1 bearing support and rotate it counter clockwise to lock it.



E314322

[Click here to learn about symbols, color coding, and icons used in this manual.](#)

101. Align the tabs with the slots and install the No. 1 bearing support locking ring.