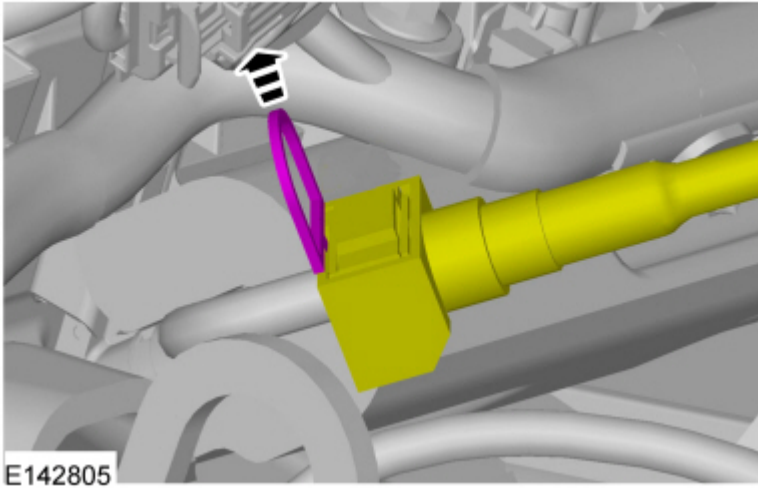


Your Ultimate Source for OEM Repair Manuals

FactoryManuals.net is a great resource for anyone who wants to save money on repairs by doing their own work. The manuals provide detailed instructions and diagrams that make it easy to understand how to fix a vehicle.

1988 FORD Thunderbird OEM Service and Repair Workshop Manual

[Go to manual page](#)



[Click here to learn about symbols, color coding, and icons used in this manual.](#)

4. Connect the battery ground cable.

Refer to: [Battery Disconnect and Connect](#)(414-01 Battery, Mounting and Cables, General Procedures).

Disconnect

NOTICE

When reusing liquid tube connectors, make sure to use compressed air to remove any foreign material from the connector retaining clip area before separating from the tube or damage to the tube or connector retaining clip may occur.

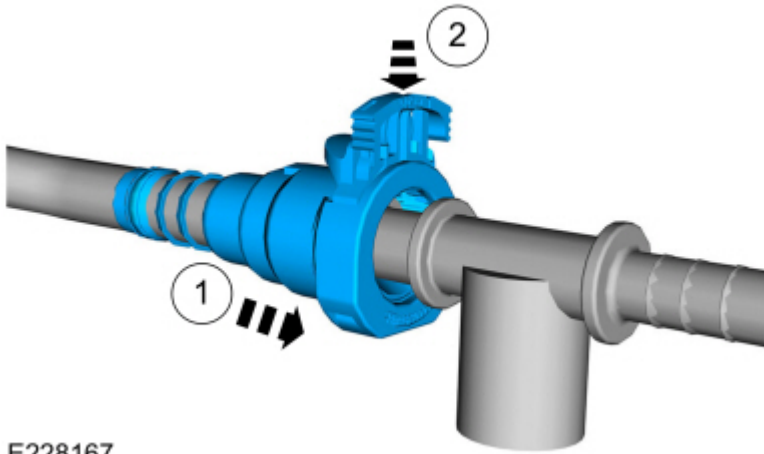
NOTICE

Fuel injection equipment is manufactured to very precise tolerances and fine clearances. It is essential that absolute cleanliness is observed when working with these components or component damage may occur. Always install blanking plugs to any open orifices or tubes.

NOTICE

Do not use any tools. The use of tools may cause a deformity in the clip components which may cause fuel leaks.

NOTE



E228167

[Click here to learn about symbols, color coding, and icons used in this manual.](#)

2. Connect the battery ground cable.

Refer to: [Battery Disconnect and Connect](#)(414-01 Battery, Mounting and Cables, General Procedures).

Disconnect

NOTICE

When reusing liquid tube connectors, make sure to use compressed air to remove any foreign material from the connector retaining clip area before separating from the tube or damage to the tube or connector retaining clip may occur.

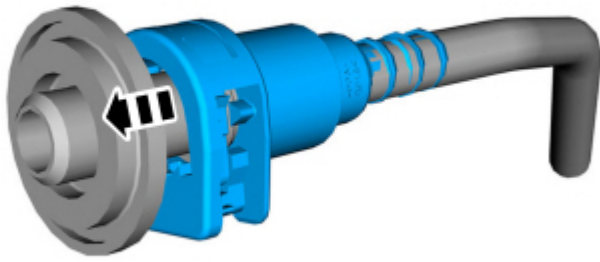
NOTICE

Fuel injection equipment is manufactured to very precise tolerances and fine clearances. It is essential that absolute cleanliness is observed when working with these components or component damage may occur. Always install blanking plugs to any open orifices or tubes.

NOTICE

Do not use any tools. The use of tools may cause a deformity in the clip components which may cause fuel leaks.

NOTE



E228169

[Click here to learn about symbols, color coding, and icons used in this manual.](#)

2. Connect the battery ground cable.

Refer to: [Battery Disconnect and Connect](#)(414-01 Battery, Mounting and Cables, General Procedures).

Disconnect

NOTICE

When reusing liquid tube connectors, make sure to use compressed air to remove any foreign material from the connector retaining clip area before separating from the tube or damage to the tube or connector retaining clip may occur.

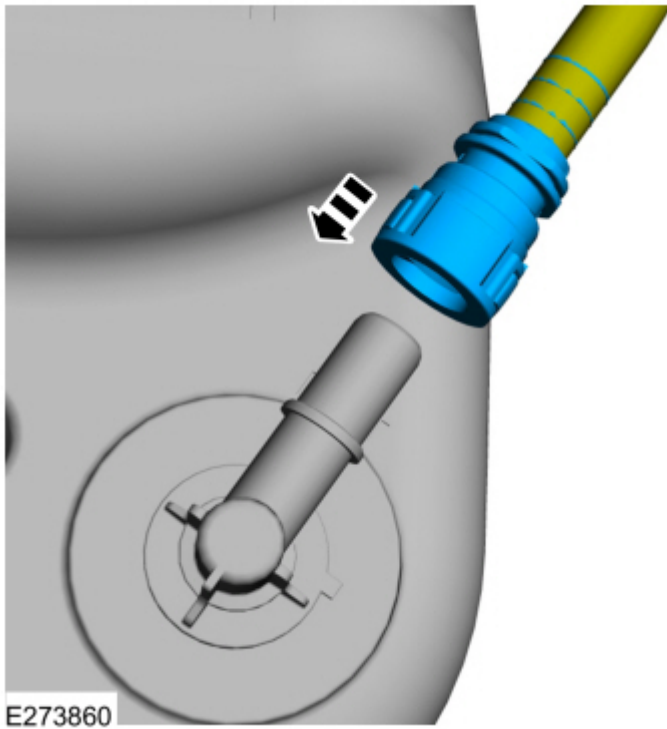
NOTICE

Fuel injection equipment is manufactured to very precise tolerances and fine clearances. It is essential that absolute cleanliness is observed when working with these components or component damage may occur. Always install blanking plugs to any open orifices or tubes.

NOTICE

Do not use any tools. The use of tools may cause a deformity in the clip components which may cause fuel leaks.

NOTE



[Click here to learn about symbols, color coding, and icons used in this manual.](#)

2. Connect the battery ground cable.

Refer to: [Battery Disconnect and Connect](#)(414-01 Battery, Mounting and Cables, General Procedures).

Disconnect

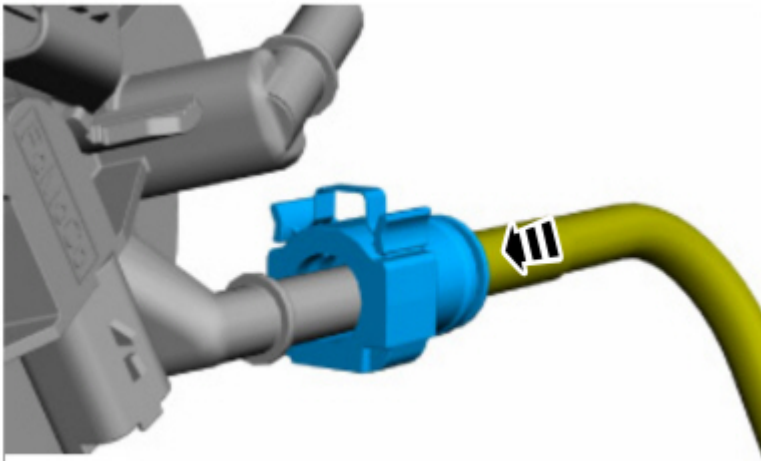
NOTICE

When reusing liquid tube connectors, make sure to use compressed air to remove any foreign material from the connector retaining clip area before separating from the tube or damage to the tube or connector retaining clip may occur.

NOTICE

Fuel injection equipment is manufactured to very precise tolerances and fine clearances. It is essential that absolute cleanliness is observed when working with these components or component damage may occur. Always install blanking plugs to any open orifices or tubes.

NOTICE



E253607

[Click here to learn about symbols, color coding, and icons used in this manual.](#)

2. Connect the battery ground cable.

Refer to: [Battery Disconnect and Connect](#)(414-01 Battery, Mounting and Cables, General Procedures).

Disconnect

NOTICE

When reusing liquid or vapor tube connections, make sure to use compressed air to remove any foreign material from the connector retaining clip area before separating from the tube or damage to the tube or connector retaining clip may occur.

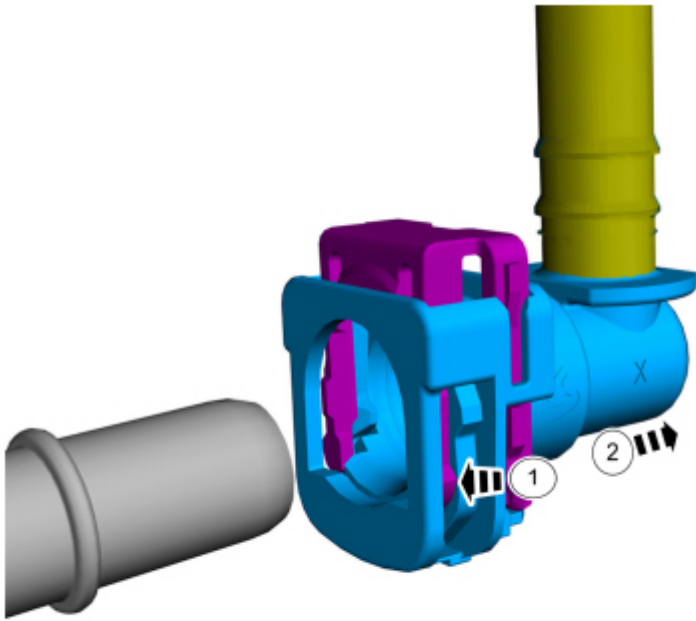
NOTICE

Fuel injection equipment is manufactured to very precise tolerances and fine clearances. It is essential that absolute cleanliness is observed when working with these components or component damage may occur. Always install blanking plugs to any open orifices or tubes.

NOTICE

Do not use any tools. The use of tools may cause a deformity in the clip components which may cause fuel leaks.

NOTE



E346204

[Click here to learn about symbols, color coding, and icons used in this manual.](#)

Connect

1. 1.

NOTE

Pull on the quick release coupling and the fitting to make sure it is securely fastened.

Snap the locking tab into place.

Spring Lock Couplings

310-00D Fuel System - General Information - 3.5L V6 PowerBoost (CN)	2022 F-150
General Procedures	Procedure revision date: 05/19/2021

Spring Lock Couplings

Disconnect

NOTICE

When reusing liquid or vapor tube connectors, make sure to use compressed air to remove any foreign material from the connector retaining clip area before separating from the tube or damage to the tube or connector retaining clip can occur. Apply clean engine oil to the end of the tube before inserting the tube into the connector.

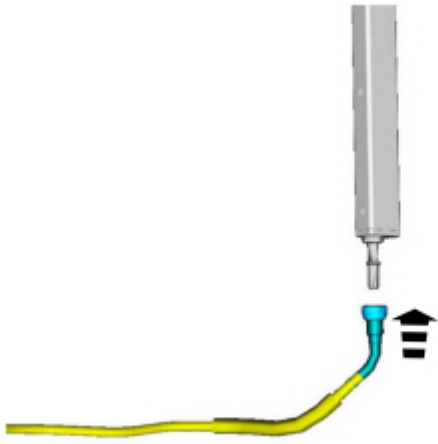
NOTICE

Fuel injection equipment is manufactured to very precise tolerances and fine clearances. It is essential that absolute cleanliness is observed when working with these components or component damage can occur. Always install plugs to any open orifices or tubes.

1. If servicing a liquid fuel tube spring lock coupling, release the fuel system pressure.

Refer to: [Fuel System Pressure Release](#)(310-00E Fuel System - General Information - 5.0L 32V Ti-VCT, General Procedures).

2. Disconnect the battery ground cable.



E156543

[Click here to learn about symbols, color coding, and icons used in this manual.](#)

2. Pull on the coupling to make sure it is fully engaged.
3. Connect the battery ground cable.

Refer to: [Battery Cables - 3.3L Duratec-V6](#)(414-01 Battery, Mounting and Cables, Removal and Installation).

Copyright © Ford Motor Company

Fuel System - Overview

310-00E Fuel System - General Information - 5.0L 32V Ti-VCT	2022 F-150
Description and Operation	Procedure revision date: 10/1/2020

Fuel System - Overview

Overview

The fuel system consists of:

- a Closed Loop Pressure Control (CLPC) system.
- fuel and vapor lines in an integrated bundle assembly.
- a single container fuel tank.
- quick connect fuel and vapor tube couplings.
- a fuel tank filler pipe assembly, which cannot be modified in any way, that also contains a misfuel inhibitor device to permit only unleaded fuel to be pumped into the tank.
- an Easy Fuel™ (capless) fuel tank filler pipe assembly, which cannot be modified in any way and is serviced only by the installation of a new fuel tank filler pipe assembly.
- a supplemental refueling adapter located behind the rear seat.
- a Fuel Pump Control Module (FPCM) located on the frame rail above the rear of the Fuel Tank.
 - **a Fuel Pump (FP) module containing:**
- the electric FP module which provides pressurized fuel to the high pressure Fuel Pump (FP).
- the fuel level sender.
- a check valve which maintains system pressure after the pump is shut off.