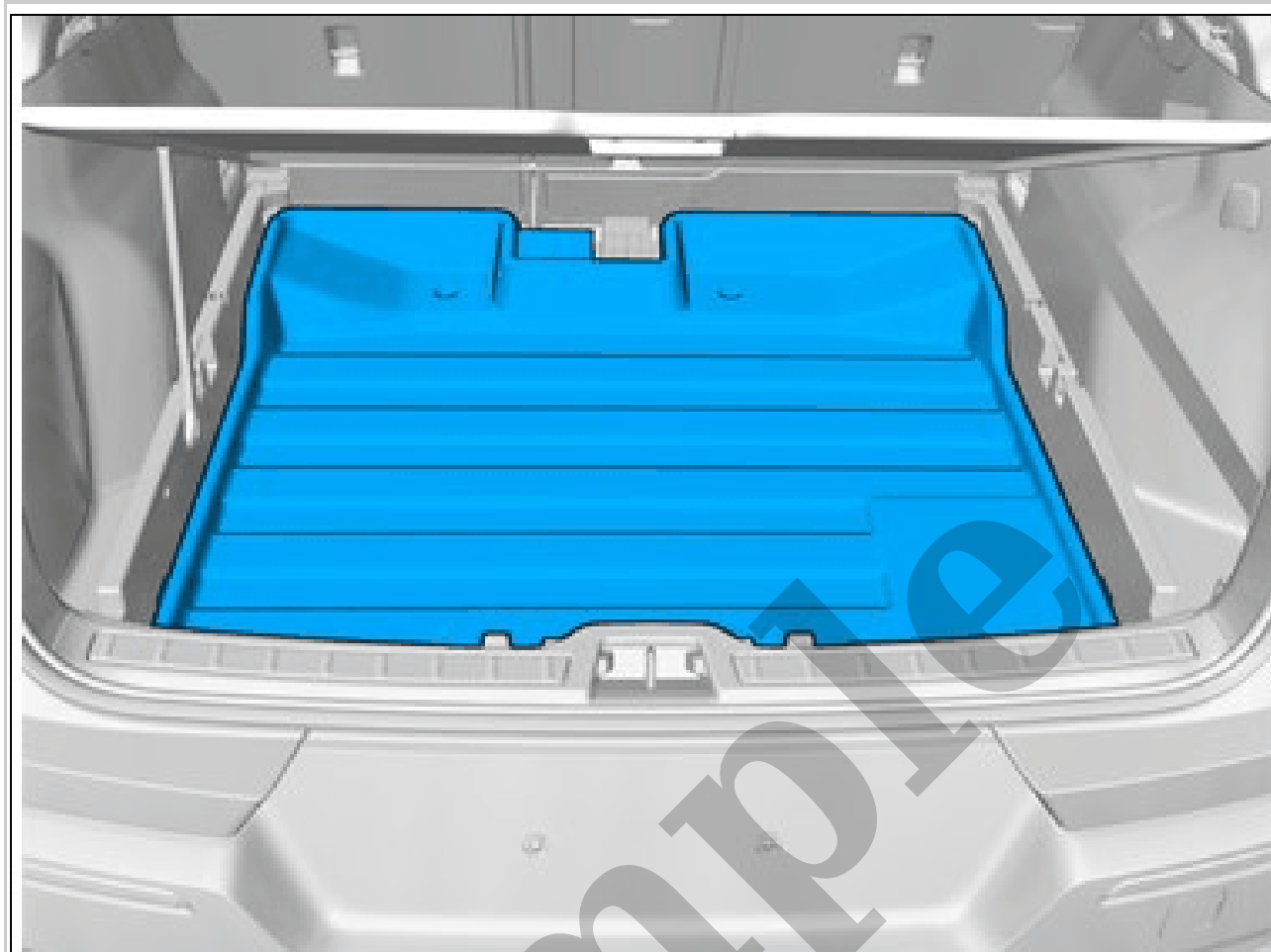


Your Ultimate Source for OEM Repair Manuals

FactoryManuals.net is a great resource for anyone who wants to save money on repairs by doing their own work. The manuals provide detailed instructions and diagrams that make it easy to understand how to fix a vehicle.

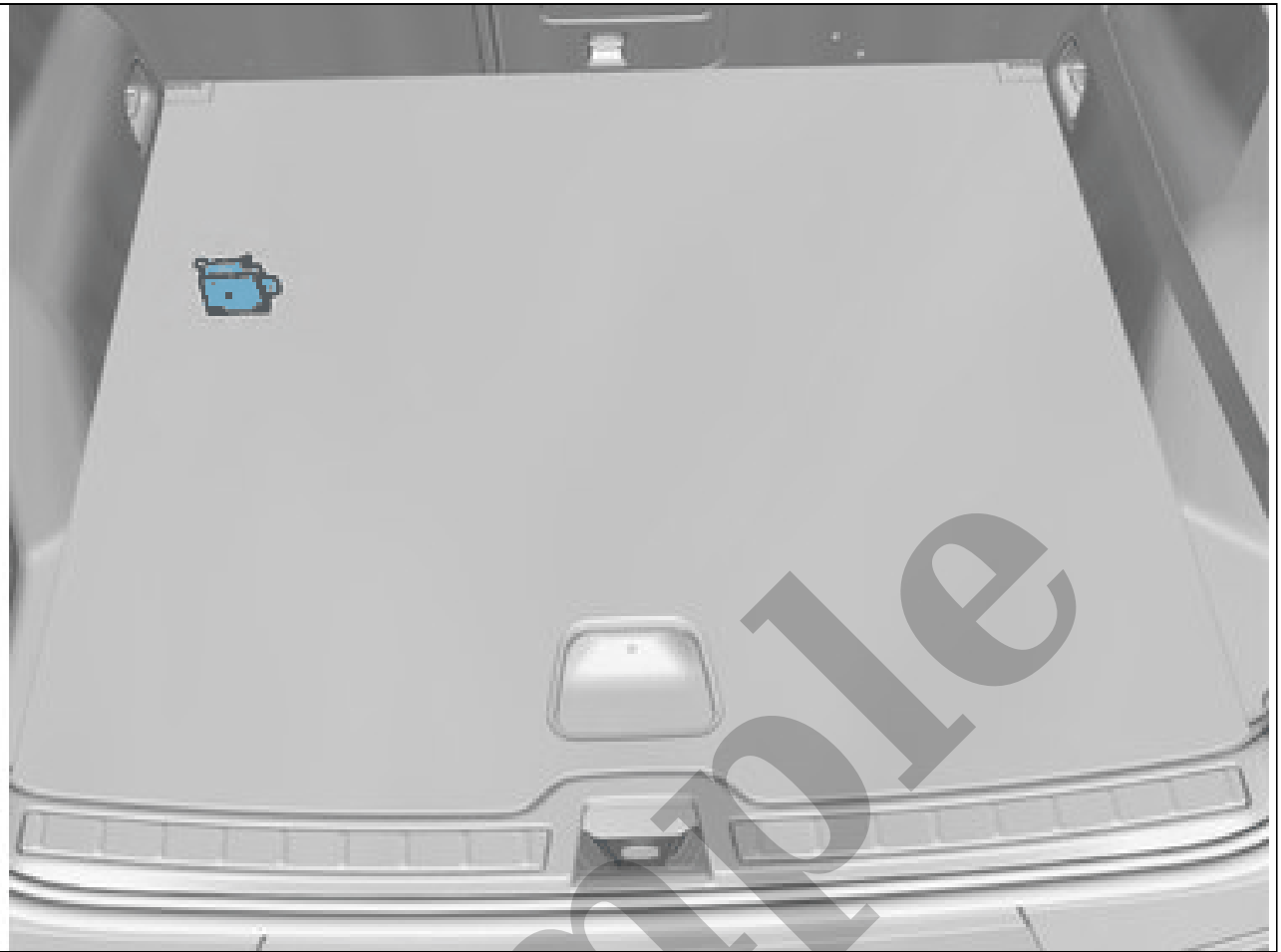
1980 VOLVO 244 OEM Service and Repair Workshop Manual

[Go to manual page](#)



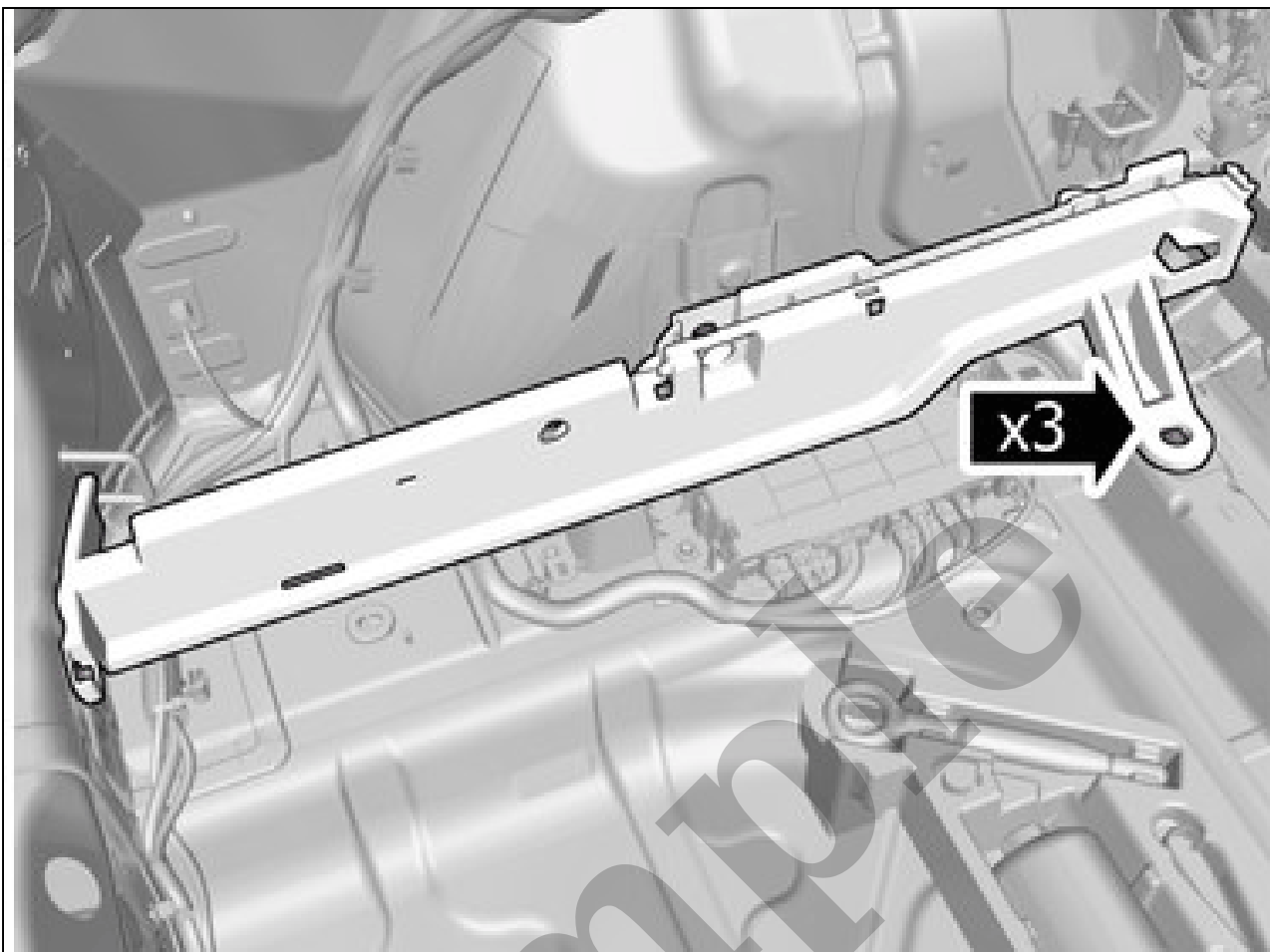
Courtesy of VOLVO CARS CORPORATION

Remove the marked part.



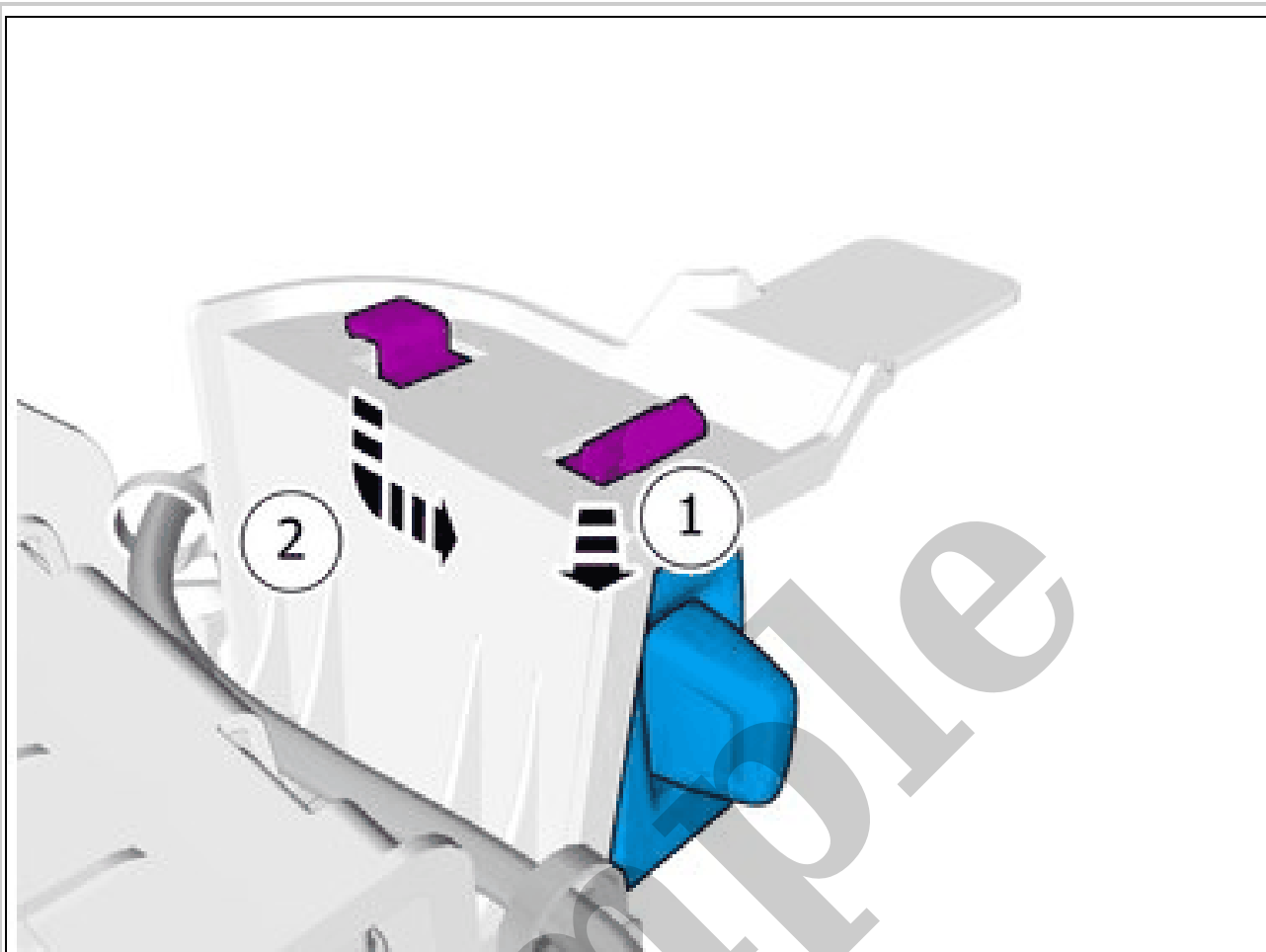
Courtesy of VOLVO CARS CORPORATION

NOTE: *Orientation view*



Courtesy of VOLVO CARS CORPORATION

Remove the screws.



Courtesy of VOLVO CARS CORPORATION

Depress the locking device.
Remove the marked part.

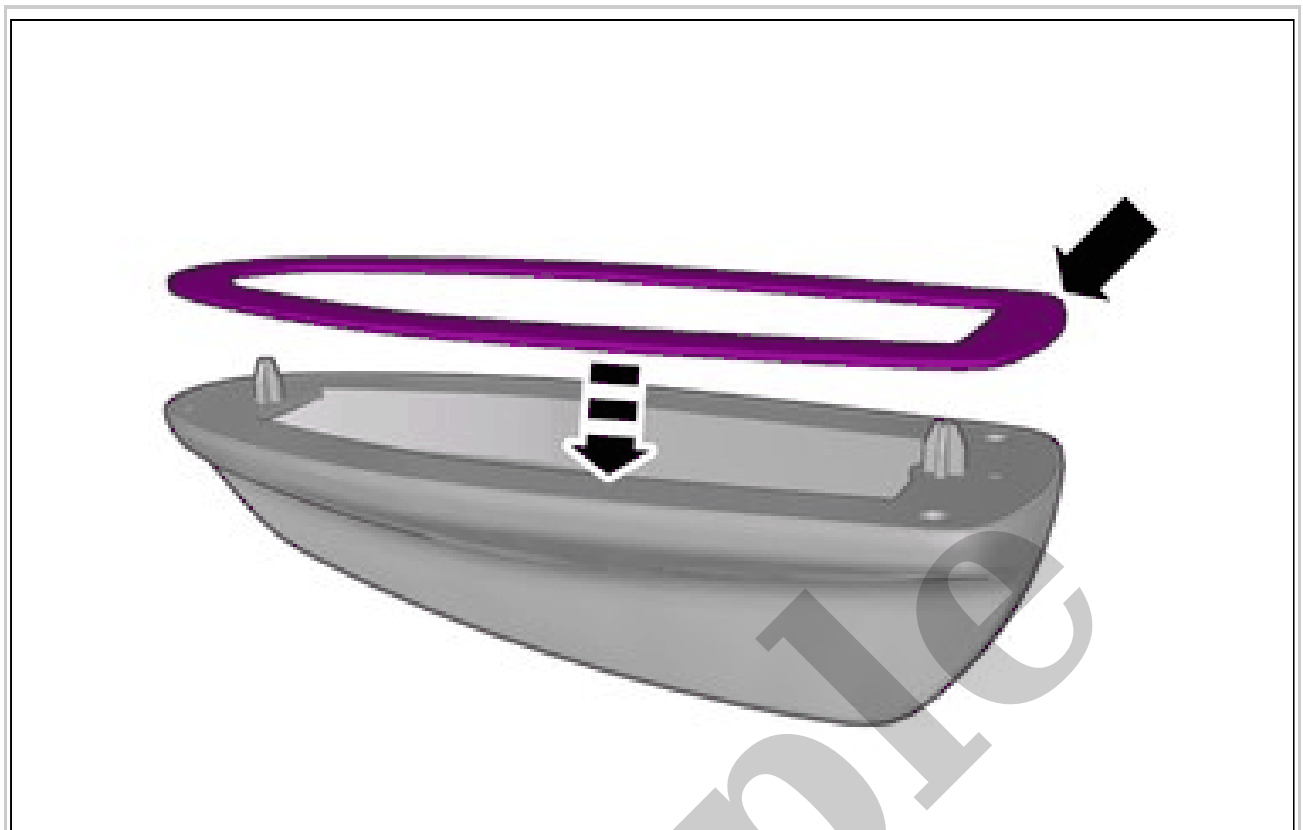
SIM CARD READER > SIM CARD READER [2018-2022] > INSTALLATION

To install, reverse the removal procedure.

TAPE ANTENNA COVER NAVIGATION SYSTEM > TAPE ANTENNA COVER NAVIGATION SYSTEM (GPS) [2018-2022] > REMOVAL AND INSTALLATION

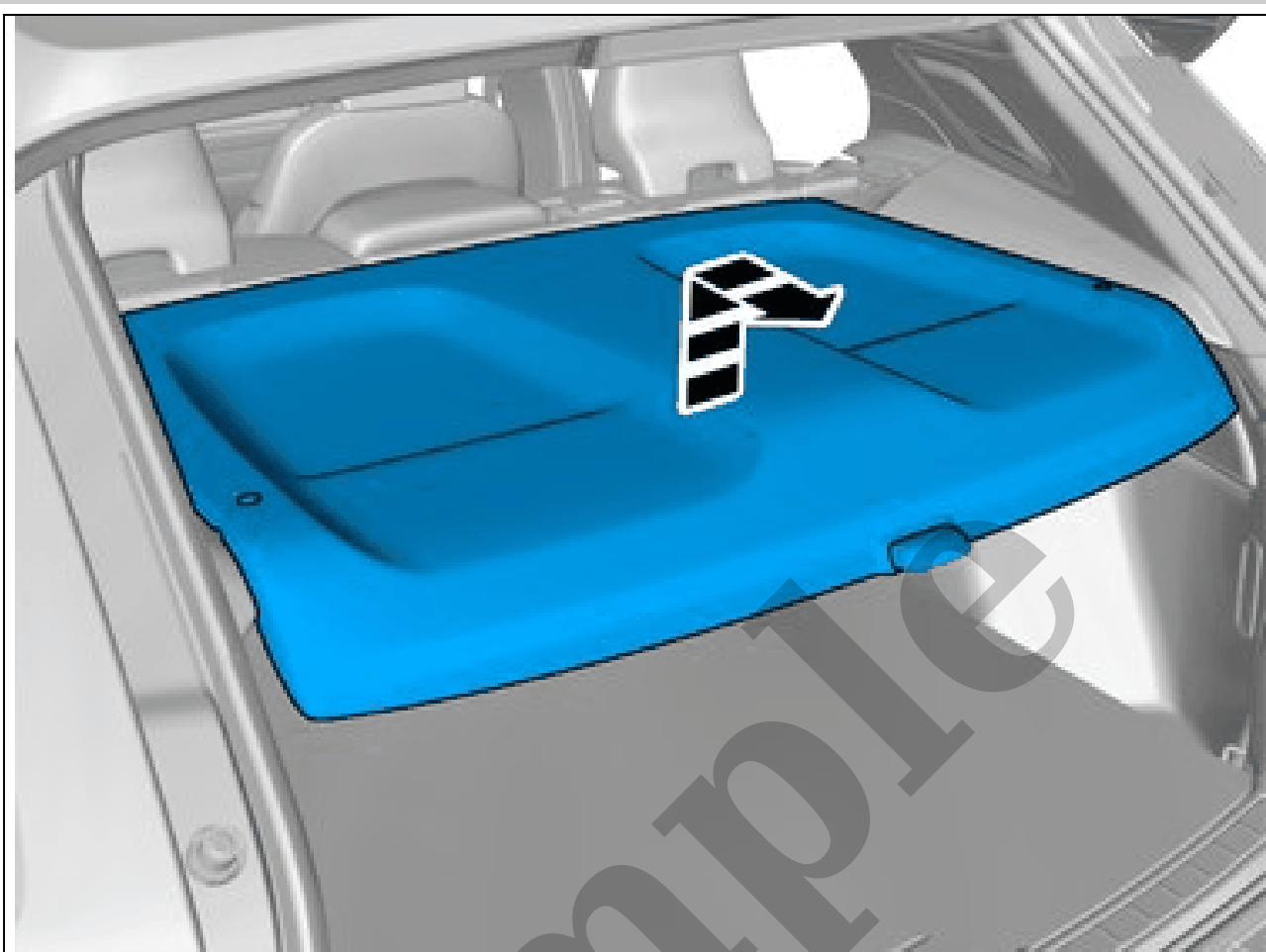
REMOVAL

Follow the instructions regarding components with double-sided adhesive tape. Refer to:
COMPONENTS WITH DOUBLE-SIDED TAPE



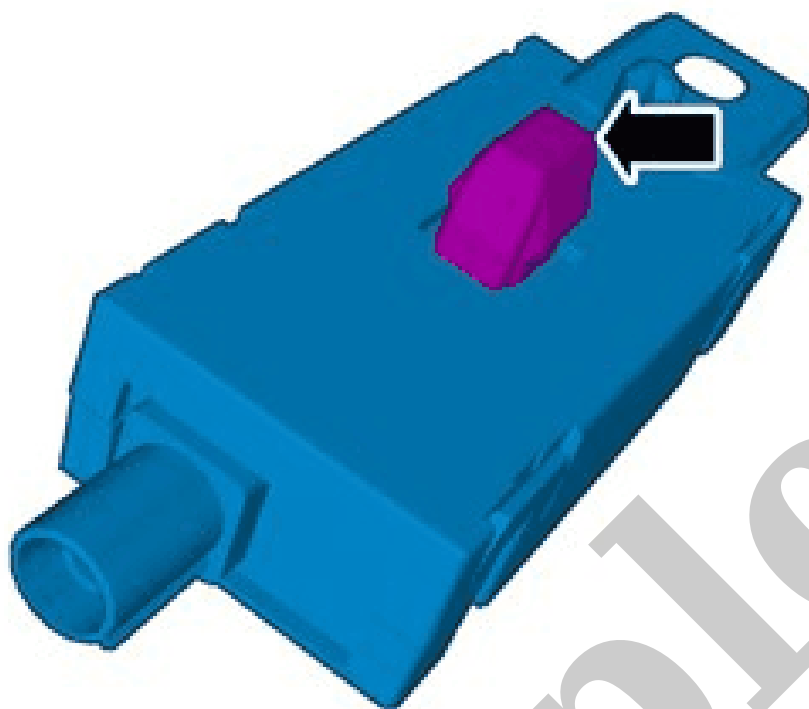
Courtesy of VOLVO CARS CORPORATION

NOTE: Make sure that new components are installed.



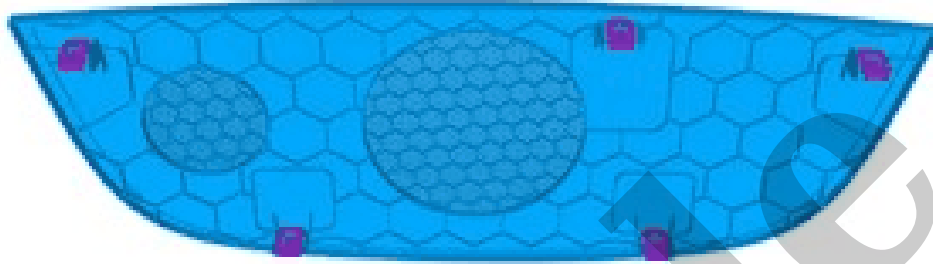
Courtesy of VOLVO CARS CORPORATION

Remove the marked part.



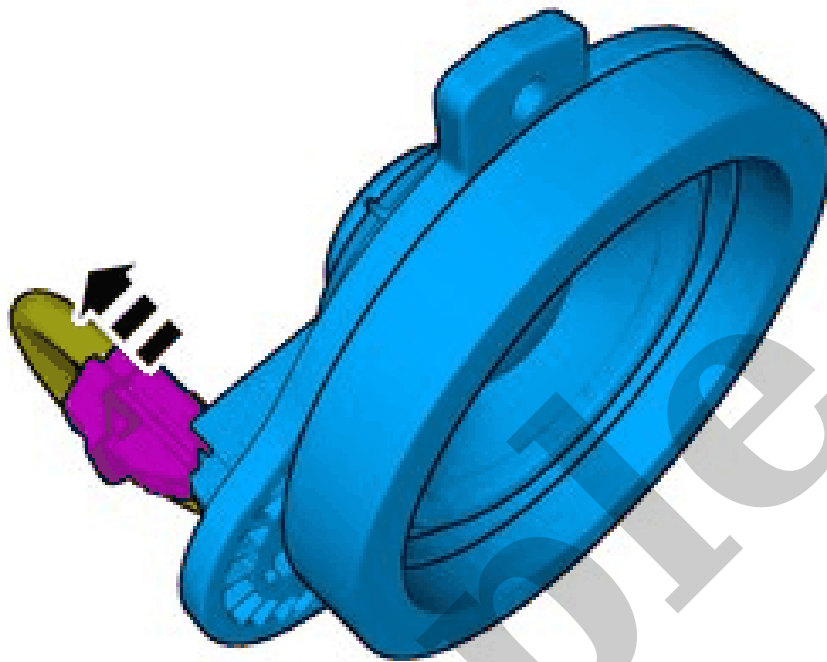
Courtesy of VOLVO CARS CORPORATION

NOTE: The graphic shows the back of the component before removal.



Courtesy of VOLVO CARS CORPORATION

The graphic shows the back of the component.



Courtesy of VOLVO CARS CORPORATION

Disconnect the connector.